

Herzlich Willkommen zum 18. GBG Jahrestreffen 2021

24.-26.02.2021

Frankfurt

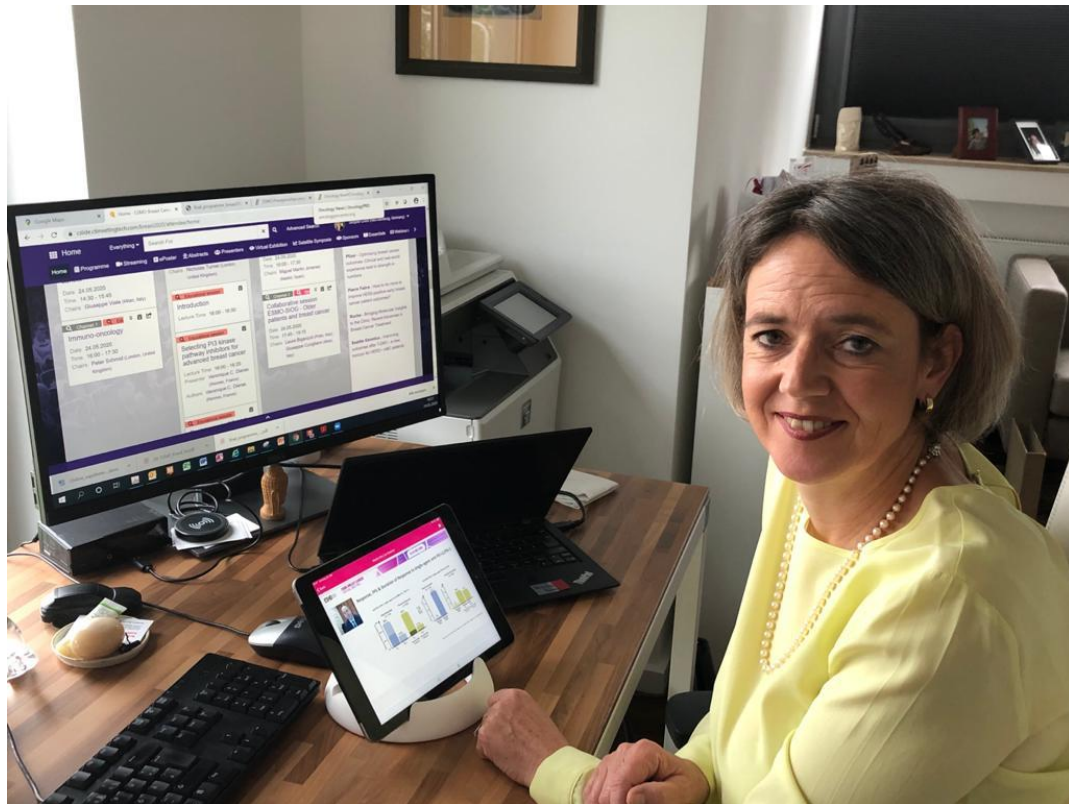




...und dann kam ...



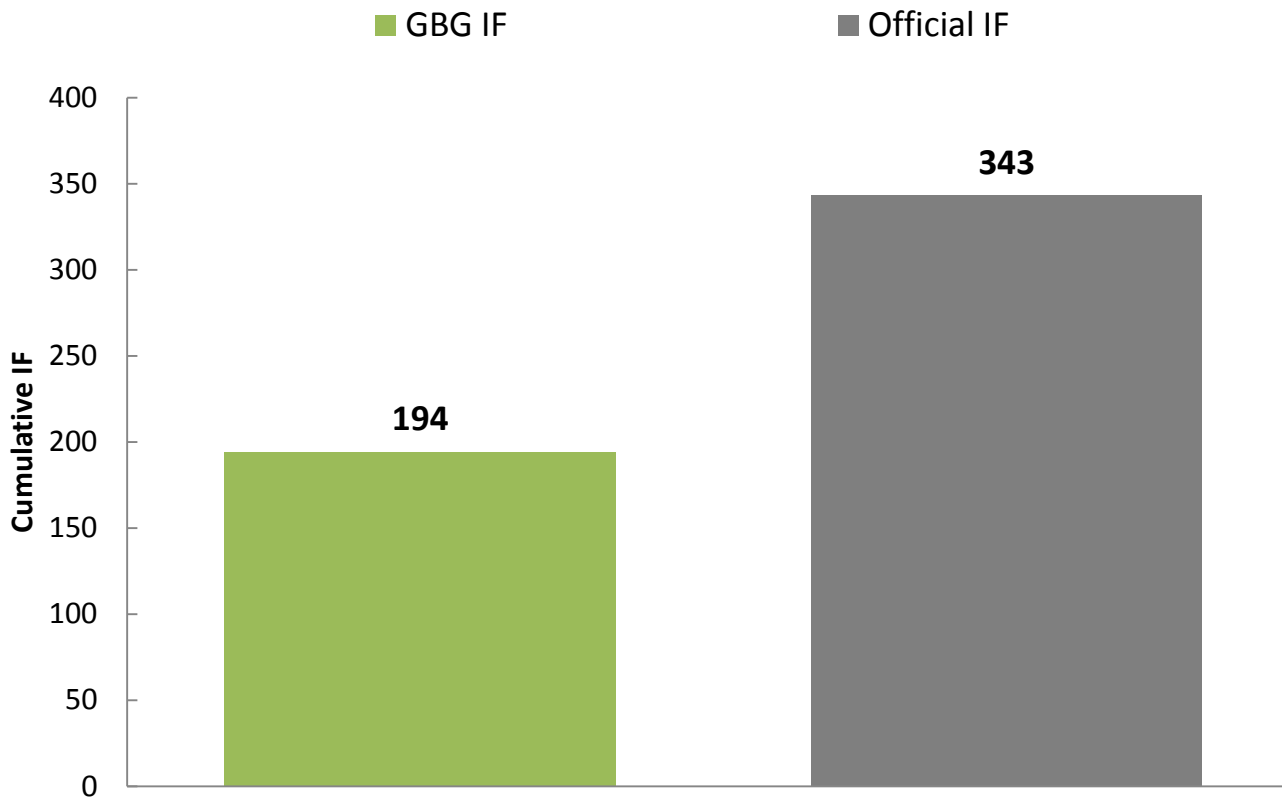
ESMO Breast - der erst digitale Kongress im Mai



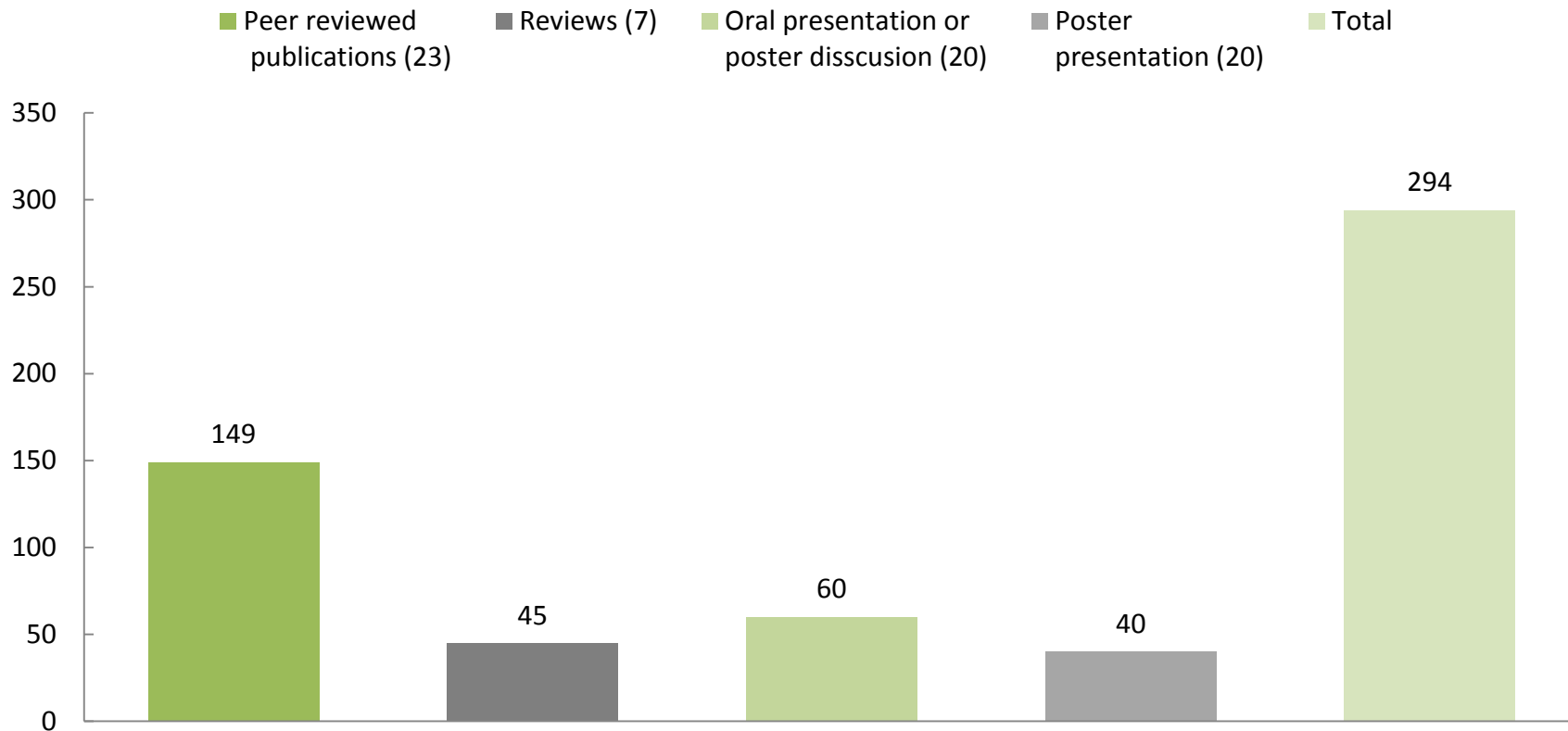
- An 11 Beiträgen direkt und indirekt beteiligt
- 1 eigenen Vortrag (PenelopeB)
- 1 Vortrag direkt beteiligt (IBIS-II)
- 3 Poster discussions (APHINITY, PALLAS)
- 6 Poster (APHINITY, neoALTTO, DESTINY-B
(TruDy))



Publikationen 2020 offizieller IF



Publikationen inhouse Faktor 2020



Publikationen (Ein Ausschnitt)

Topic	Titel	Journal	IF
PenelopeB	Palbociclib for Residual High-Risk Invasive HR-positive/HER2-negative early breast cancer -The Penelope-B trial	J Clin Oncol.	32.96
MALE	Efficacy of Endocrine Therapy for the Treatment of Breast Cancer in Men: Results from the MALE Phase 2 Randomized Clinical Trial	JAMA Oncol	24.80
HER2CLIMB	Tucatinib, Trastuzumab, and Capecitabine for HER2-Positive Metastatic Breast Cancer	N Engl J Med	74.70
BRCA in G8	Association of Germline Variant Status With Therapy Response in High-risk Early-Stage Breast Cancer: A Secondary Analysis of the GeparOcto Randomized Clinical Trial	JAMA Oncol	24.80
GeparOLA	Neoadjuvant paclitaxel/olaparib in comparison to paclitaxel/carboplatinum in patients with HER2-negative	Ann Oncol.	18.27
G9 biomarkers	Tumor m neoadju	Ann Oncol.	18.27
G9 immunomarkers	Differential effect on different immune subsets of neoadjuvant chemotherapy in patients with TNBC	J Immunother Cancer	10.25
G5 biomarkers	A small hypoxia signature predicted pCR response to bevacizumab in the neoadjuvant GeparQuinto breast cancer trial	Clin Cancer Res	10.11
Pooled analysis	Germline BRCA1/2 mutations and severe hematological toxicities in patients with breast cancer treated with neoadjuvant chemotherapy	Eur J Cancer	7.28
Pooled analysis	Locoregional recurrence risk after neoadjuvant chemotherapy: A pooled analysis of nine prospective neoadjuvant breast cancer trials	Eur J Cancer	7.28
BMBC registry	Characteristics and Clinical Outcome of Breast Cancer Patients with Asymptomatic Brain Metastases	Cancers	6.37
INSEMA	Central Review of Radiation Therapy Planning Among Patients with Breast-Conserving Surgery: Results from a Quality Assurance Process Integrated into the INSEMA Trial	Int J Radiat Oncol Biol Phys.	5.86

Gesamtimpaktfaktor 343



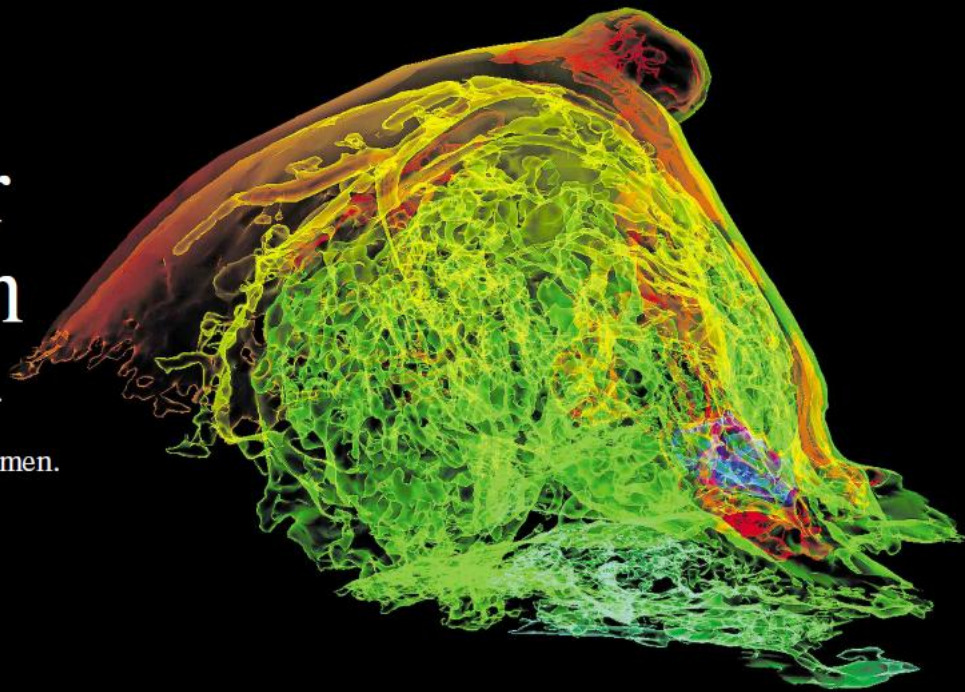
Was haben wir aus den Daten gemacht?

Studie	primär	sekundär	Biomarker
Male	√		
PALLAS	√		
GeparOLA	√	√	
Brightness		√ √	√
GeparNUEVO			√ √ √
GeparOCTO		√	√
Insema		√ √	
BMBC		√ √	
GeparSIXTO			√
Katherine		√	
PANTHER		√	

Werkzeugmacher der Krebsmedizin

Jeder dritten Mammakarzinom-Patientin wird
unnötigerweise zur Entfernung der Brust geraten.
Eine neue Anleitung für Ärzte soll sicherstellen,
dass die Betroffenen die richtige Therapie bekommen.
Ob sie nützt, bezweifeln Experten.

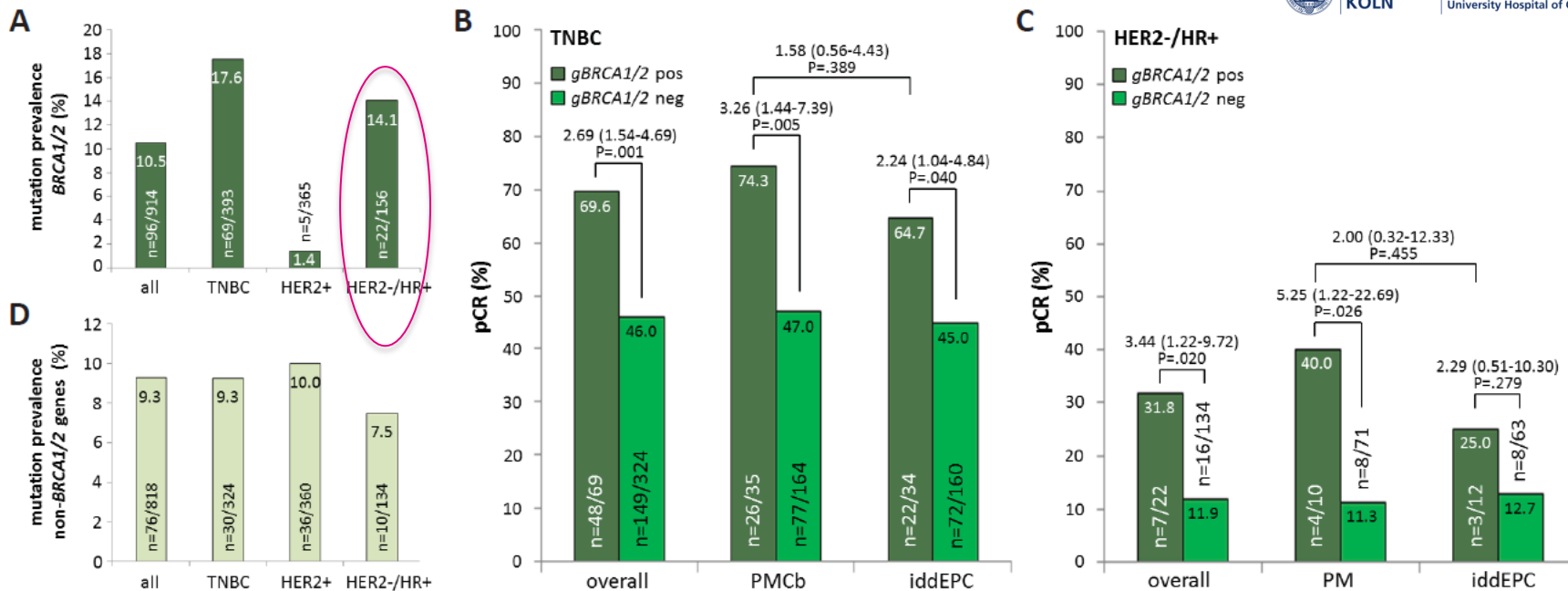
Von Felicitas Witte



MRT-Aufnahme einer Brust mit dichtem Drüsengewebe, in der ein in der Mammographie oft unsichtbarer Tumor (blau eingefärbt) besser sichtbar gemacht werden kann

Foto SPL/Bearbeitung F.A.Z.

gBRCA Analyse aus der GePAROCTO



JAMA Oncology

RCT Efficacy of Endocrine Therapy for the Treatment of Breast Cancer in Men

POPULATION

56 Men



Men with hormone receptor-positive breast cancer

Median age, 61.5 y
(range 37-83 y)

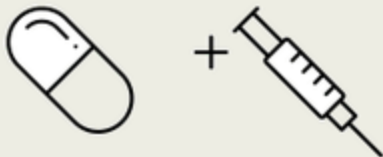
SETTINGS / LOCATIONS



24 Breast units or
medical centers,
Germany

INTERVENTION

50 Men randomized and analyzed for primary outcome



17 Tamoxifen alone:
Oral tamoxifen 20 mg daily

15 Tamoxifen + GnRHα: Oral tamoxifen 20 mg daily and subcutaneous gonadotropin-releasing hormone analogue (GnRHα) every 3 mo

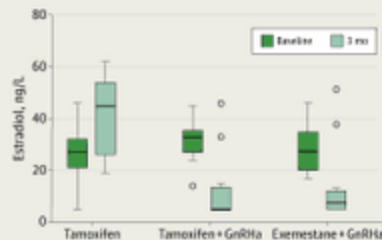
18 Exemestane + GnRHα: Oral exemestane 25 mg daily and subcutaneous GnRHα at baseline and after 3 mo

PRIMARY OUTCOME

The primary outcome was the change of estradiol levels after 3 months of therapy (normal range of estradiol was between 27-52 ng/L, the threshold of detection was below 5 ng/L)

FINDINGS

Estradiol levels significantly decreased in men receiving either tamoxifen + GnRHα or exemestane + GnRHα but significantly increased in men receiving tamoxifen alone



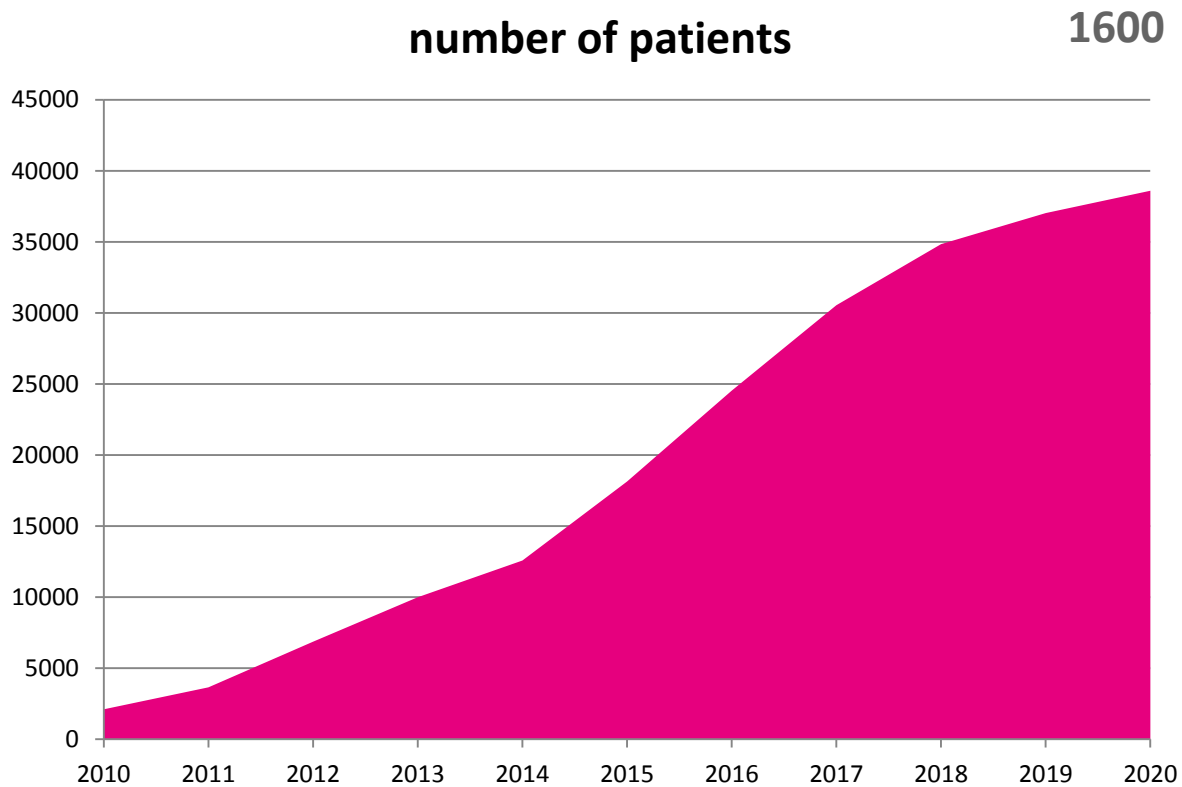
% Change in median estradiol level, baseline to 3 mo

Tamoxifen alone: 67% increase (+17.0 ng/L)

Tamoxifen + GnRHα: 85% decrease (-23.0 ng/L)

Exemestane + GnRHα: 72% decrease (-18.5 ng/L)

Rekrutierung 2020

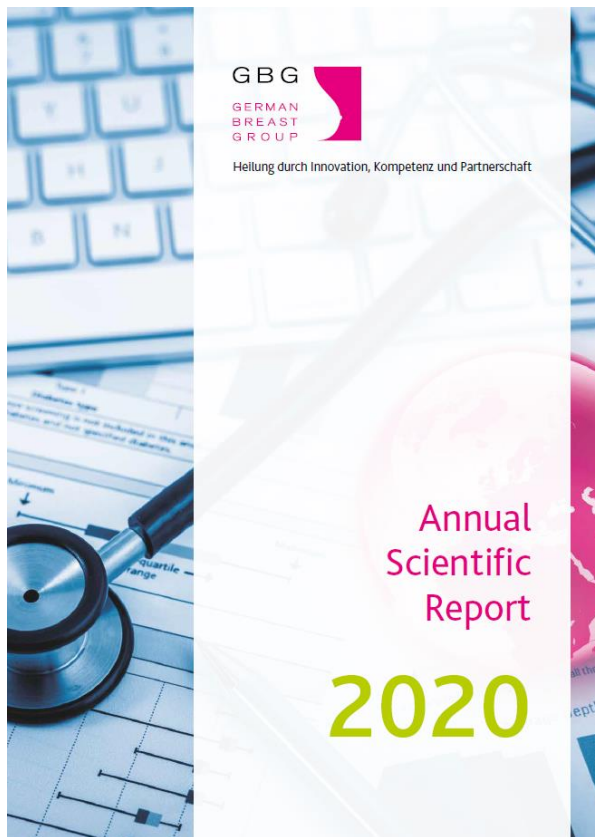


In 2020 mit der Rekrutierung gestartet und beendet

Studie	Wann
Adjuvant	
SASCIA	November
Appalaches 70 EORTC	März

Studie	Wann
Palliativ	
DESIREE	Oktober

Annual Scientific Report (ASR) 2020



Patientenkongress letztes Jahr noch live





- GAIN: Langzeit follow-up
- PANTHER: Langzeit-follow up
- ICE: Overall Survival Daten
- PALLAS – Beobachtungsarm!
- **GAIN-2!**
- Penelope -B
- GeparNUEVO! Nicht vergessen
- GeparX

- **Wechsel des Datentreuhänders**
 - Dadurch Verzögerungen in der Aussendung in 2018
- **Neuer Kontakt**
 - Zentrum für Klinische Studien Köln
 - www.zks-koeln.de



Collaborators and Network

Network

Cooperation partners

Cooperating laboratories

Cooperating study groups and universities



GBG Subboards 2020 & AGO-B Board 2020

▪ Neoadjuvant

Blohmer, Denkert, Fasching, Hanusch, Huober, Jackisch, Link, Loibl, Rhiem, Schneeweiss, Solbach, Untch

▪ Adjuvant

Loibl, Marmé, Möbus, Reimer, Stickeler, Reinisch, Janni, Schmatloch, Schmidt, Sinn, Untch

▪ Palliativ

Decker, Denkert, Loibl, Mundhenke, Müller

▪ Operativ

Ataseven, Blohmer, Denkert, Gerber, Golatta, Hahn, Heil, Krug, Kühn, Loibl

▪ Translationale Forschung (TraFo)

Denkert, Fasching, Karn, Loibl, Marmé, Müller, Schem, Stickeler, van

Vielen Dank an alle für die
GUTE ZUSAMMENARBEIT

Fasching, Janni, Jackisch, Janni, Kühn, Lück, Möbus, Müller, Rack, Schmidt, Schneeweiss, Stickeler, Thomssen, Untch u.a.

HERZLICHEN DANK AN UNSERE SPONSOREN

   **20.000**

    **10.000**

    **5.000**

A Sandoz Brand



- **3-Tage Hybridveranstaltung**
- **Kostenfrei für ALLE**
- **Studienupdates, Trafo und neue Protokolle**
- **Reviews of the Year**
- **Workshops dieses mal nur einer**
 - Nebenwirkungsmanagement neuer Tumorthérapien
- **Satellitensymposien**

Viel Vergnügen

